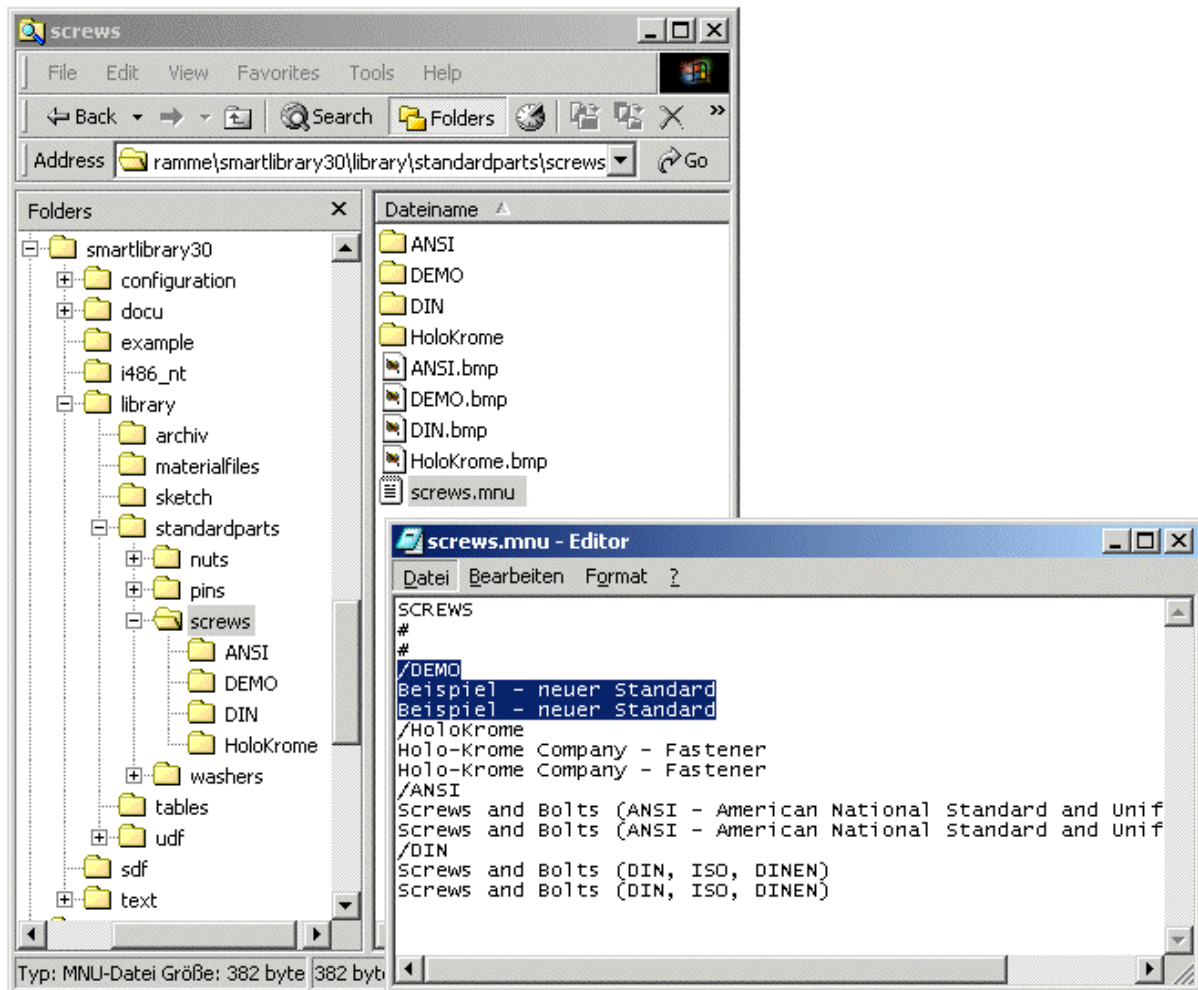


Insert your own standardparts to SmartLibrary

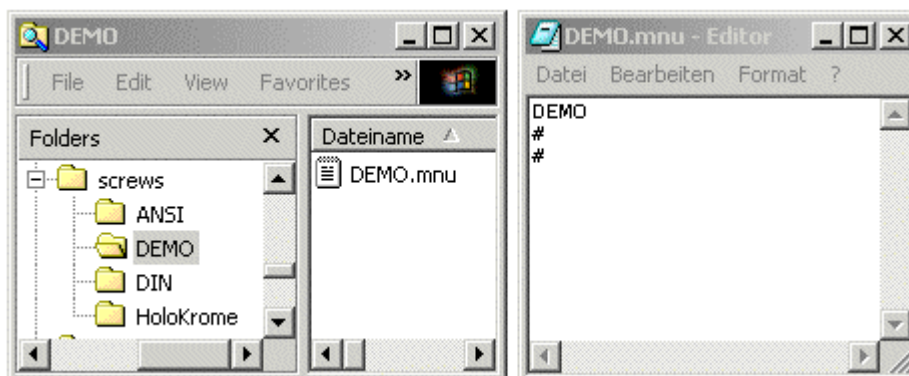
The way you can insert your own Standardpart to smartLibrary should be explained by using the following screw.

Create a new Standard

Create a new folder with the name **DEMO** int the directory **..|library|standardparts|screws**. Copy the Bitmap **DIN.bmp** and rename it to **DEMO.bmp**. Now add the entry shown in the figure below to the **screw.mnu**.



Now create a text file **DEMO.mnu** in the folder **DEMO**.



The new Standard is now created and can be filled with new data.

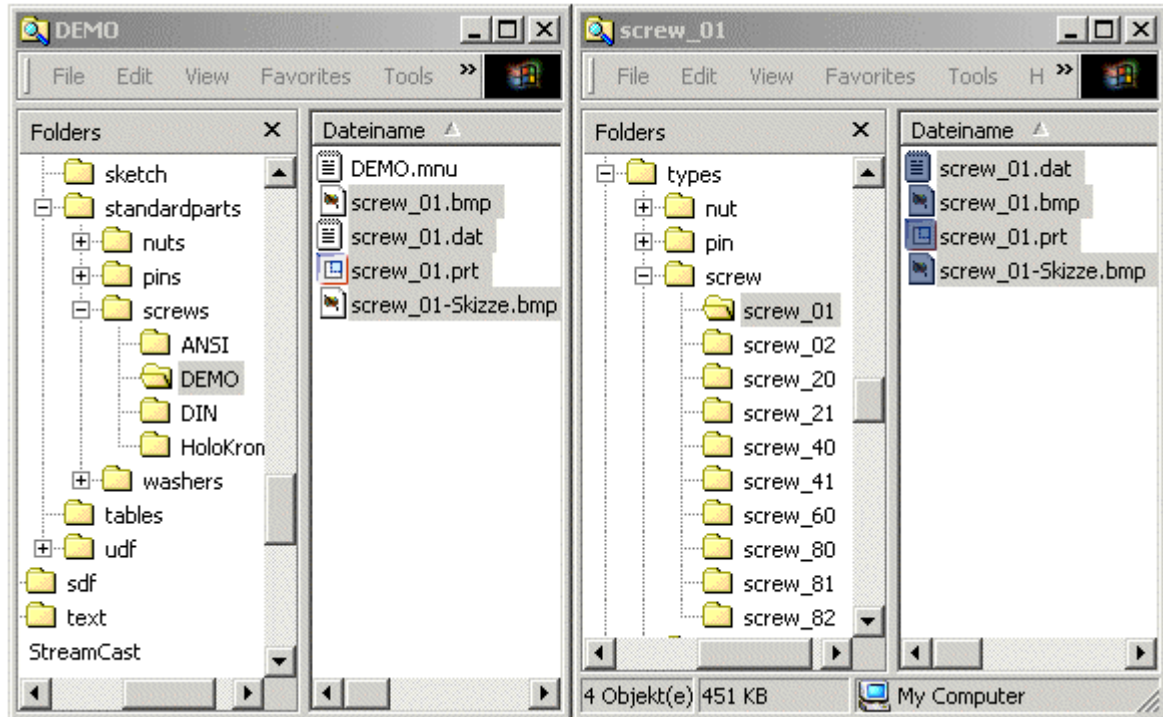
1. Screwtype

First of all you have to find out the screwtype. (Screwtype see handbook).

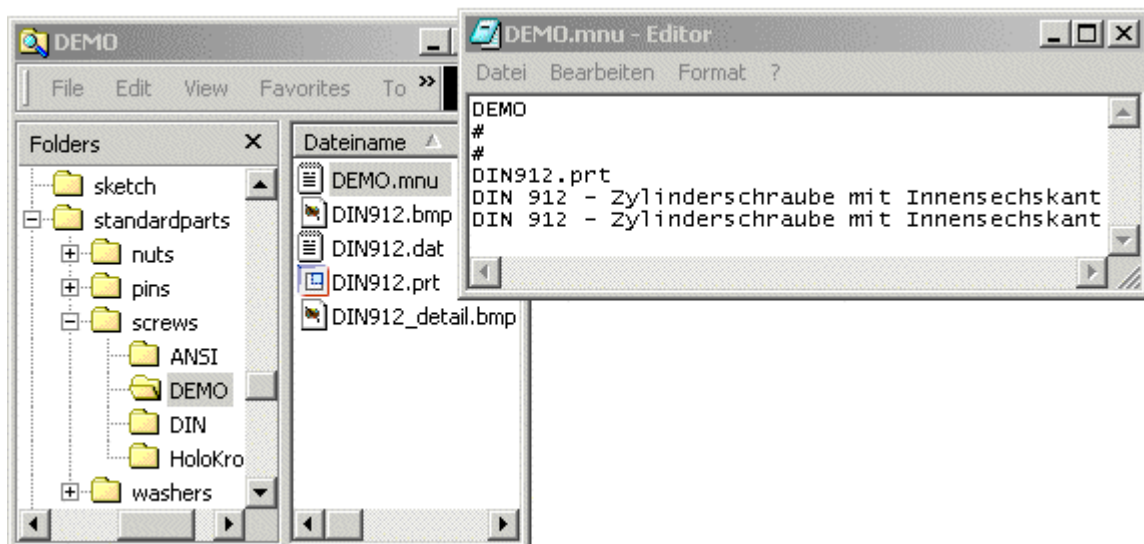
In our example we will add a socket head cap screw (type 1) with the unit Milimeter to the library.

Copy the files as shown in the figure below.

From **..configuration|types|..** to **..library|standardparts|screws|DEMO**.



Rename the copied files and add the entry to the **DEMO.mnu**.



2. Add new instances

Open the file **DIN912.dat** and add the following lines to the file.

	A	B	C	D	E	F	G	H	I	J
1	-----									
2	! Zylinderschraube mit Innensechskant									
3	-----									
4	SCREWTYPE	1								
5	UNIT	MM								
6	SYMBOL	STRING	DN	LG	B	S	DK	K	DG	P
7	INSTANCE	Selektio	NennDM	Laenge	Gewinde	Schlues	KopfDM	Kopfhoe	Gewinde	Steigung
8										
9	DIN912-M4x10	M4	4	10	10	3	7	4	3.3	0.7
10	DIN912-M4x20	M4	4	20	20	3	7	4	3.3	0.7
11	DIN912-M4x30	M4	4	30	20	3	7	4	3.3	0.7
12	DIN912-M4x35	M4	4	35	20	3	7	4	3.3	0.7
13	DIN912-M4x40	M4	4	40	20	3	7	4	3.3	0.7
14										
15	DIN912-M5x10	M5	5	10	10	4	8.5	5	4.2	0.8
16	DIN912-M5x20	M5	5	20	20	4	8.5	5	4.2	0.8
17	DIN912-M5x30	M5	5	30	22	4	8.5	5	4.2	0.8
18	DIN912-M5x35	M5	5	35	22	4	8.5	5	4.2	0.8
19	DIN912-M5x40	M5	5	40	22	4	8.5	5	4.2	0.8
20	DIN912-M5x45	M5	5	45	22	4	8.5	5	4.2	0.8
21	DIN912-M5x50	M5	5	50	22	4	8.5	5	4.2	0.8

The names in the column INSTANCE must be valid Pro/ENGINEER names.

Attention: All entries have to be separated by tabs.